

2012

Без тем за 11 клас



– 180

36

- 1.
- 2.
- 3.
- 4.
- 5.

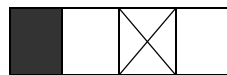
31 – 36

6.

(SI)

- 1.
- 2.
- 3.
- 4.

1 – 30



31 – 36

- 5.
- 6.

!

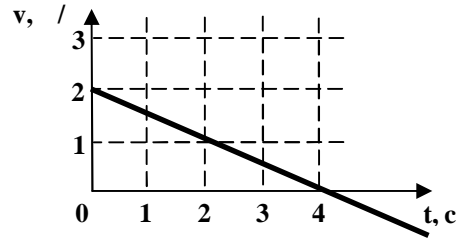
«

»

1-26

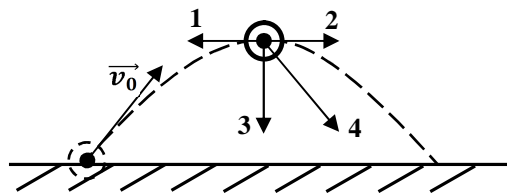
--

1.



$v(t) = 2 + 0,5t$	$v(t) = 2 - 0,5t$	$v(t) = 2 - 2t$	$v(t) = 4 - 0,5t$
-------------------	-------------------	-----------------	-------------------

2.



-1, -3	-4, -2	-2, -3	-3, -3

3.

4.

$1,334 \cdot 10^{25}$ кг
 $6,67 \cdot 10^{-11} \frac{\text{Н} \cdot \text{М}^2}{\text{кг}^2}$

			670
20 / ²	133,4 / ²	13,34 / ²	10 / ²

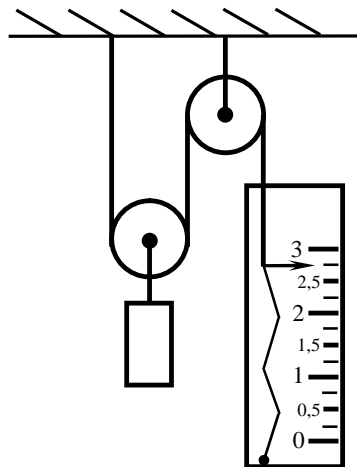
5.

200 .
 0,2 .
 $g = 10^{\text{М}}/\text{с}^2$

36 /	10 /	40 /	20 /

6.

$g = 10^{\text{М}}/\text{с}^2$.



225	100	50	75

7.

8 .
 2 .
 ?

4	2	4	2

8.

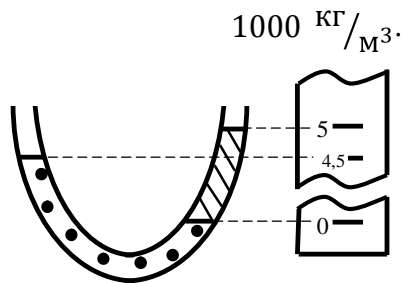
108 /

0,3. , $g = 10^M/c^2.$

150	50	300	100

9.

U-



800 кг/м^3	850 кг/м^3	900 кг/м^3	1111 кг/м^3

10.

$x(t) = 0,05 \cos(\frac{\pi}{2}t + \frac{\pi}{3}).$

1	2	4	0,25

11.

500

2

3

1	3	6	12

12.

: «

».

13.

() ,

14.

12 / (2). 16 / . 1,1' .

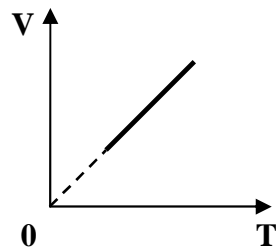
0,004	4	25	0,025

15.

3 . ?

9
9
3
3

16.

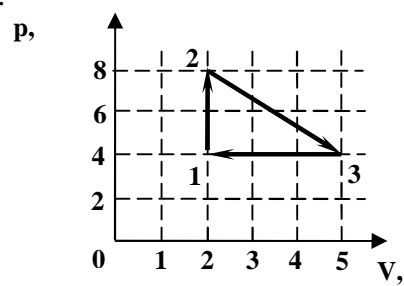


17.

2 20 830 . ,
20 / ,
8,3 Дж/моль · К

200 ⁰	-73 ⁰	73 ⁰	-200 ⁰

18.

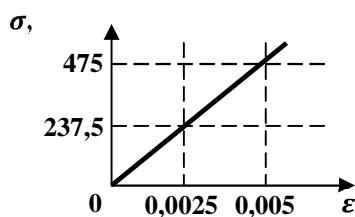


6	12	3	24

19.

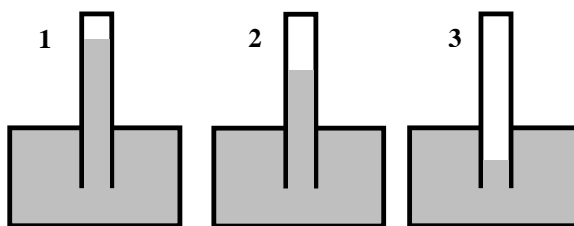
$500 \frac{\text{Дж}}{\text{кг} \cdot \text{К}}$, а м $385 \frac{\text{Дж}}{\text{кг} \cdot \text{К}}$

20.



95	190	23,75	47,5

21.



$\sigma_3 > \sigma_2 > \sigma_1$	$\sigma_1 > \sigma_2 > \sigma_3$	$\sigma_2 > \sigma_3 > \sigma_1$	$\sigma_3 > \sigma_1 > \sigma_2$

22.

$1,5$, 5 -2

$4,5$

$1,5$

23.



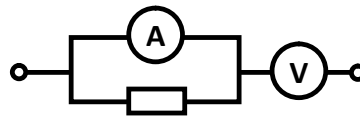
24.

1800 , *0,3* *20*

2	0,5	0,3	1

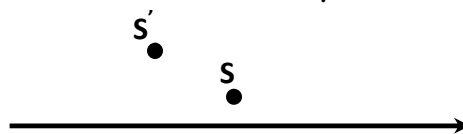
25.

« »,



26.

(S') (S),



,
,
,
,

27-30

() ().
!

27.

1 $\frac{v_0^2 \sin^2 \alpha}{2g}$

2 $\frac{\Delta v}{\Delta t}$

3 $\frac{\Delta \varphi}{\Delta t}$

4 $\frac{S_1 + S_2 + \dots + S_n}{t_1 + t_2 + \dots + t_n}$
 $v_0 t + \frac{at^2}{2}$

1					
2					
3					
4					

28.

1 ,

2 ,

3 ,

4

1					
2					
3					
4					

29.

- 1
- 2
- 3
- 4

$$Q = A$$

$$Q = \Delta U$$

$$A = -\Delta U$$

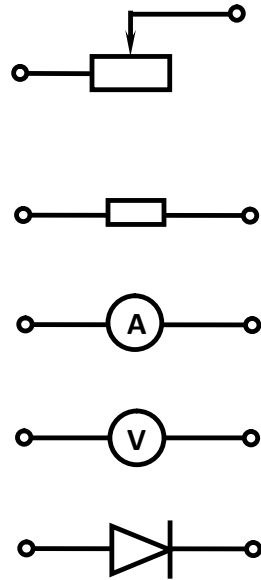
$$Q = \Delta U + A$$

$$Q = -A$$

1					
2					
3					
4					

30.

- 1
- 2
- 3
- 4



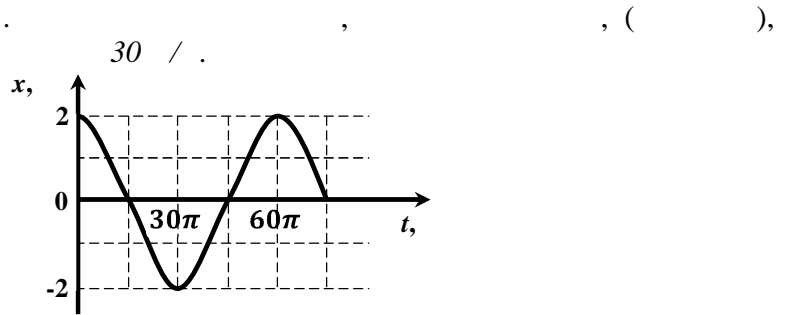
1					
2					
3					
4					

31-36.

31.

$2 \text{ М} / \text{с}^2$ та про $8 \text{ } \frac{2}{\text{}}$,

32.



33.

$500 \text{ } / \text{}$ $100 \text{ } / \text{}$

34.

-10 , 24 , 210

35.

40 , $q_1 = -4 \text{ нКл}$, $q_2 = -9 \text{ нКл}$

36.

$R_1 = 2 \text{ Ом}$, $R_2 = 0,8 \text{ Ом}$, $R_3 = 2 \text{ Ом}$, $R_4 = 3 \text{ Ом}$, $R_5 = 4 \text{ Ом}$.

